

Making education  
a reality

MARCH 2011

Ardoch  
Youth Foundation

**PATRON: SIR ZELMAN COWEN, FORMER GOVERNOR GENERAL OF AUSTRALIA**

198 St Kilda Road, St Kilda VIC 3182, p: (03) 9537 2414 f: (03) 9537 3211 e: info@ardoch.asn.au  
w: www.ardoch.asn.au ABN 48 119 813 188

## BRISBANE FIGHTS BACK AFTER FLOODS

After what has been called one of Queensland's worst floods in 40 years, thousands of Brisbane students are returning to school after the massive devastation left by the floods. Authorities in Queensland, with help from local communities have spent many hours repairing flood effected schools ready in time for the beginning of term.

Ninety – two state schools, 14 TAFE Campuses and nearly 80 child care and kindergartens were significantly affected by the floods. Yet despite this extensive flood damage, only three Brisbane schools did not open for the first day of term due to severe flood damage.

With Ardoch Brisbane partner schools Loganlea State High School, Holy Rosary School, Seville Road Primary School and new early childhood centre – Holland Park Child Care Centre, escaping serious flood damage, we spoke to Katie Cox from the Ardoch Brisbane office about the key problems facing Brisbane after the floods.

"One of Brisbane's biggest concerns is the short supply of fruit and vegetables after much of the local crops have been all but destroyed. Prices have gone through the roof and it now costs five dollars to buy a lettuce! It is becoming extremely

difficult for many families experiencing disadvantage to provide healthy meals for their families. Fresh food has become a luxury item!"

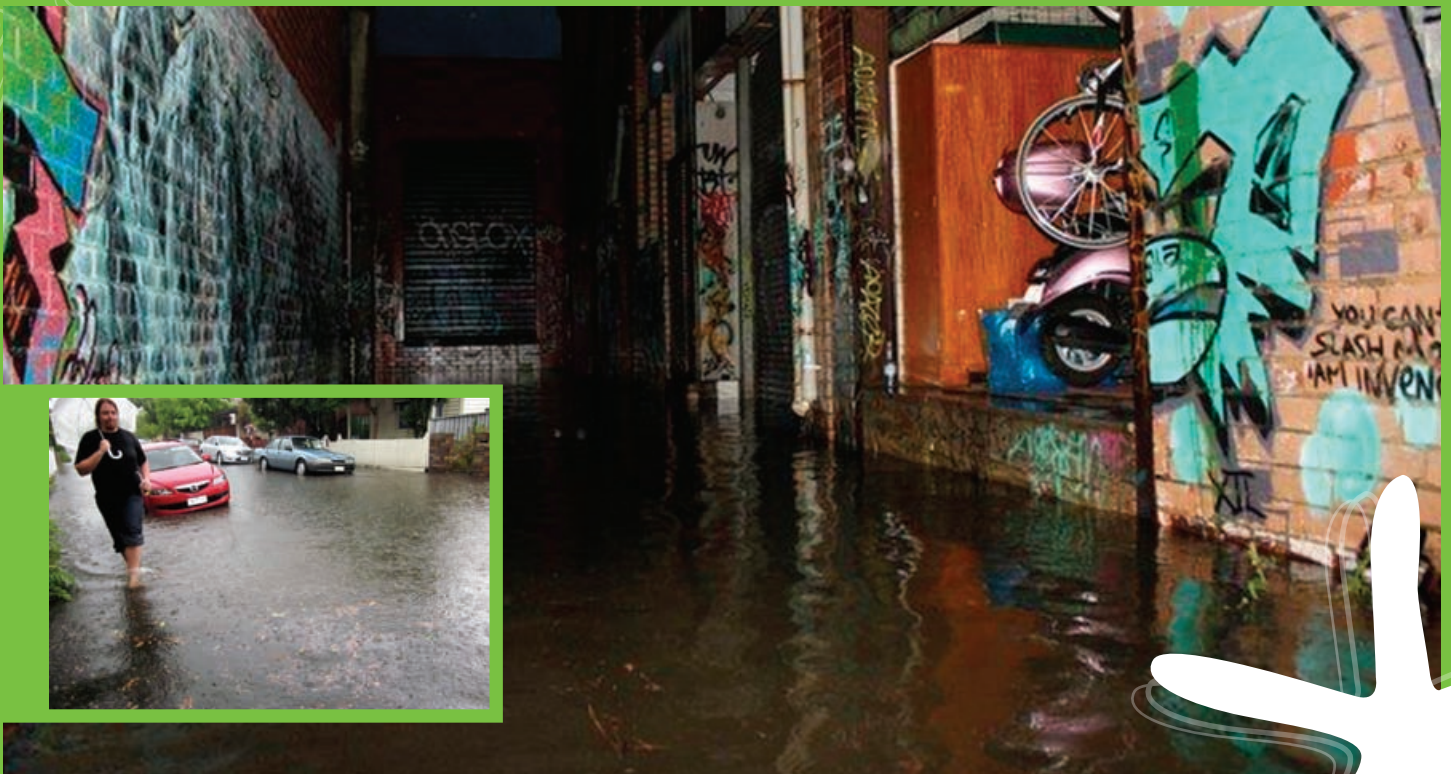
Although the floods have touched almost all of those living in Queensland, families living in low socio economic areas have been the most severely hit. Many experiencing disadvantage live in low lying areas and are in need of the most support to get back on their feet. Homes, clothing, food and personal possessions were destroyed and now the task lies with the community to come together and rebuild.

Ardoch Brisbane recently joined Foodbank, Australia's largest hunger relief charity, to assist servicing the many breakfast and lunch clubs that Ardoch is supporting. With access to fresh fruit and vegetables, healthy meals can be provided to support those families who simply can't afford the soaring prices.

Ardoch Brisbane has also been contacted by the Department of Education and schools to provide relief, especially for support with stationery and school resources.

Although it could be a long time before Brisbane returns to normal, the incredible display of compassion shown by so many in Australia and the Brisbane community in the rebuilding effort highlights the shining Australian spirit.

If you would like to help support Brisbane, please contact Sharon Whip or Katie Cox (Brisbane Coordinators) on (07) 3254 3637 or [katie.cox@ardoch.asn.au](mailto:katie.cox@ardoch.asn.au).



# NAB TEES OFF FOR ARDOCH

**NAB and its business banking clients have again reached out in support for Ardoch at the NAB Charity Golf day raising \$150K! What an incredible day it was with nearly 120 players turning out at Huntingdale Golf Course ready to tackle the greens and put their golfing prowess to the test.**

BMW Group was a major sponsor for the second year and touched the event with their unique sense of style and sophistication. Unfortunately no one got a hole in one, but the change of winning a stunning new BMW was exciting.

Hawthorn Football club legend Shane Crawford and renowned horse trainer David Hayes joined the teams to show their support for Ardoch. Golfing great Brett Ogle mentored the players, passing on some invaluable coaching tips to keep the players at the top of their game.

With fantastic prizes up for grabs including a collection of Penfolds wines, a beautifully framed jumper signed by Carlton great Chris Judd and a behind the scenes experience with David Hayes at his thoroughbred training complex, it was no surprise the auction was a great success.

The highlight of the afternoon was the display of kindness when players were asked to pledge \$50 to provide one child with breakfast for a year. The pledges came quickly and within 5 minutes, \$25 000 had been raised to sponsor breakfast for 500 children. What a difference these pledges will make to so many children and young people!

Once again, the team at NAB business banking and their clients gave generously and thoughtfully to support Ardoch. From everyone at Ardoch, our thanks go to Tom Costopoulos and the team from NAB Business Banking for supporting us at this event.

What could not be possible by one individual, is made reality by an entire community coming together to show their support. We look forward to another fantastic year in 2011, celebrating our partnerships and the compassion that is shown to support students, schools and their families.



# GEELONG EAST PRIMARY SCHOOL TACKLES CHESS CHALLENGE

While Geelong East Primary has been running a school chess competition for many years, 2010 was the first year that students decided to enter a challenging chess tournament at Torquay Primary.

The nine selected Grade 5 and 6 students were quickly learning all the formal rules and regulations required for the competition, and with the tournament being facilitated by Captain of the Russian Olympic Chess team, Leonid Sandler, the event shaped up to be one of the biggest challenges the students had faced in competitive chess.

Amazingly, GEPS students' best five competitors took out 4th spot! Their top player finished 4th overall! Not one GEPS

student finished lower than 18th position. Later in the year, a Regional Tournament took place with ten GEPS students. Again, students performed exceptionally well, claiming 2nd and 3rd spots overall which meant qualifying for the state titles in October.

Financial concerns meant that costs associated with entry for each of the 10 students, buses, private coaching and staffing for the day were almost impossible to cover. Through some generous interventions, \$800 was kindly donated by GE to help make this dream a reality. Despite Geelong East students finishing outside the top placing, all Geelong East students finished in the top half of all competitors and it is truly remarkable how well these students performed with only a few weeks of private coaching. Well done!

The chess competitions at GEPS have nurtured the focus, organisation, strategy and social skills of the students and broadened the possibilities for future success!

We are currently looking for more chessboards to expand this program so if you would like to help with donations please contact Carla Barbieri on 9537 2414 or [carla.barbieri@ardoch.asn.au](mailto:carla.barbieri@ardoch.asn.au).





# CCF PRESIDENT'S LUNCH SUPPORTS ARDOCH

It was almost 17 years ago that Ardoch's founder, Kathy Hilton met Civil Contractors Federation's then CEO, Ian Jacka, at a business luncheon in 1994. Through their mutual recognition of the importance of education as a tool for opportunities in life, the relationship was formed.

In their first year of partnership, CCF held their annual golf day and dinner with all proceeds from the event being donated to Ardoch. As well as raising funds for Ardoch, the event instilled Ardoch's vision and established a level of awareness amongst all attendees. CCF has continued to support Ardoch ever since, with goods and services being donated to schools and individuals whenever a need arose.

In November 2010 with new CEO Claude Cullino, 200 members of the Civil Contractors Federation, president Ian Sowerby, partners and clients came together at the annual CCF President's Luncheon and raised \$4865 for Ardoch. The event fulfilled its promise to be a fantastic event with renowned 3AW commentator Tony Leonard as MC and star guest speaker Lawrie Lawrence. As one of Ardoch's longest partnerships, we thank the CCF for their continued show of support of us over the years.



# BECOME A FRIEND OF ARDOCH

Ardoch is now supporting even more young people to access educational opportunities and reach their potential through education, young people like Samantha - *"If it wasn't for the assistance and guidance I received from Ardoch I don't believe I would have finished my VCE and now be pursuing further studies"*

You can help - by making a fully tax deductible donation to Ardoch you will be supporting young people, including those experiencing disadvantage, to reach their potential. Join with us and together we can make a difference!

Yes I wish to become a Friend of Ardoch and make a tax deductible donation each month. Please debit the credit card below each month until further notice with:

\$10  \$50  \$100  \$200  \$500

Other: .....

Yes I wish to become a Friend of Ardoch and here is my single tax deductible donation of:

\$10  \$50  \$100  \$200  \$500  \$1,000

Other: .....

My credit card details:  Visa  Mastercard  Amex

Cardholder's Name: .....

Cardholder's Signature: .....

Card No:

Expiry Date: /

I have enclosed my cheque - payable to Ardoch Youth Foundation

Please complete all details so we can forward your tax deductible receipt

Name: .....

Company: .....

Address: .....

Suburb: .....

Address: .....

State: ..... Postcode: .....

Yes, I would like to receive Ardoch's quarterly newsletter and updates by Email Post

No, I do not want Ardoch's quarterly newsletter and updates

Please send me information about leaving a bequest to Ardoch

Please send me information about volunteering with Ardoch

Post your donation to: Ardoch Youth Foundation, 198 St Kilda Rd, St Klida VIC 3182

Fax your donation to 03 9537 3211

Call 03 9537 2414 for telephone donations

Secure online donation at [www.ardoch.asn.au](http://www.ardoch.asn.au) and follow the links

Ardoch Youth Foundation Ltd is a Tax Deductible Gift Recipient, all donations \$2 and over are tax deductible ABN 48 119 813 188



## OPENING THE DOORS TO THE FUTURE: Sunshine North opens first library

Sunshine North Kindergarten recently celebrated the opening of their first multilingual lending library! To mark the event, the kindergarten hosted an open day centred on literacy themed activities, musical sessions and a visit from popular children's author, Hazel Edwards. The event created an engaging learning environment and showed the students that reading can be an exciting and enjoyable experience. The event also focused on engaging parents and encouraging them to integrate reading and literacy in their homes.

The opening of the library was made possible by the work of seven students from the Student Ambassador Leadership Program (SALP) from Melbourne University. Working closely with Ardoch, they helped raise necessary funds through a bake sale held at Melbourne University to establish the library and purchase books and bilingual reading materials.

In total, over a hundred books were donated to the kindergarten from book companies, libraries and friends of the kindergarten. Many of Sunshine North's students are from non-English speaking backgrounds, so many of the books donated to the library are bilingual which opens up opportunities for both students and parents to engage fully in the reading experience.

## ARE YOU OUR FRIEND?



Ardoch is excited to announce that it has launched its first official Facebook page! It is a fantastic opportunity for Ardoch to connect with volunteers, supporters and the general public in an entirely new way. The page allows users to keep up to date with volunteering opportunities, events and issues surrounding youth and education.

To become a fan of the page, search "Ardoch Youth Foundation" and click the "Like" icon. When you click "Like", this shows your support for Ardoch and allows you to see status updates, make comments and view photos.

Users need to have an existing Facebook account to become a fan. Security settings are in place to ensure that users' identities are protected and with regular monitoring, the page will act as a safe forum for Ardoch supporters to engage. The Ardoch Facebook page will be updated daily, so keep an eye out for upcoming opportunities to show your support!

For queries please contact Ardoch's Marketing Communications Coordinator, Bec Howard on (03) 9537 2414 or at [rebecca.howard@ardoch.asn.au](mailto:rebecca.howard@ardoch.asn.au).



## SPECIAL THANKS

Thank you to the following individuals, groups and businesses for their generous donations of clothing, food, toiletries, toys, prizes, services and goods over the past few months.

Alexandra Roc Kiman, Art of Living Foundation, Barbara Rigby, Bec Young, Bunnings Warehouse, Claire Gardner, Colonial First State, Darren & Sharon Carnell, Dave Kiwanis, Dorothy Opat, Elwood Primary, Emma Bowd, Essendon Private Hospital, Fiona Ennis, GE, Heinz, Helen Aldensey, Imogen Cowan, Jacqui Kiers, Jamie Rose, Jenny Walsh, Jill Hartley, Jude Kelleit, Kalyani Blidde, Kau Tsousis, Kennards Hire, Kimberley Irwin, Kristy Roberts, Lincolne Scott, Lindzay, Melbourne Markets Lions Club, Meydan Property Group?, Miaidi Women, Mirvac, MLC, Norlene Ignace, Northern Trust, Penny Gibson, Peter Horwood, Rachael Kelly, Rachel Elsworth, Rachel Trainor, Rita Hyams, Sharon Lowe, Southern Cross Shuffleboards, St James Apartments, St Joan of Arch Primary School, St Leonards Parents Association, Sue Lynch, Sue Lynh, Sue Munro, Sue Rockman, Susan Strong, Susie Rogers- Wilson, The Women of the University, Tracy Frederik, Wesley College, Wesley Middle School, Wesley Pride – Parents Association



## MEASURING THE IMPACT OF LITERACY BUDDIES™

Literacy Buddies™ is a letter exchange program between a classroom of students (Little Buddies) and a group of corporate employees (Big Buddies). In 2010 Ardoch facilitated 39 Literacy Buddies™ programs. That's close to 900 students with 900 corporate employees writing around 14,400 letters in total!

In 2010, we evaluated the program asking for feedback...

The vital results

### What the teachers had to say:

All teachers agreed that Literacy Buddies made a positive impact on student learning. Teachers identified that the program helped to improve literacy, social and personal growth outcomes and expanded students' experience of the world:

*"This is a powerful way of learning that comes from writing for real life purpose."* (Teacher)

*"Students now have insight into the lifestyle of a person outside of their own immediate social network."* (Teacher)

### What the Big Buddies had to say:

93% of Big Buddies recognised that their Little Buddies made improvements in a number of areas over the course of the program:

*"I watched my little buddy develop stronger writing skills and use her creativity. It was clear to me that my letters were important to her, and that she enjoyed receiving them and sharing them with her family and friends."* (Big Buddy)

*"As well as the connection to the program it is a nice point of contact with colleagues to discuss the enjoyment of this initiative."* (Big Buddy)

### What the Little Buddies had to say:

Overwhelmingly, kids loved writing letters to their Big Buddies:

*"It can show you if you want to work in an office like the Big Buddy - and it's good for skills in writing."* (Student)

*"It's good to connect with people above your age as well as your friends."* (Student)

*"Literacy Buddies is great - so much fun. You get to write letters and when you know you'll receive a letter back it's even more fun."* (Student)

